



## GD400-2 2V400AH GD SERIES-Deep Cycle Battery



### Applications

- ◆ Electric tools
- ◆ Vehicle in place of walking
- ◆ Lawn mowers
- ◆ Golf trolleys and golf cart
- ◆ Portable apparatus, lights and instruments;
- ◆ Electric toys
- ◆ Illumination light
- ◆ Fire alarms
- ◆ Portable power
- ◆ Wheelchairs
- ◆ Solar energy systems
- ◆ Marine
- ◆ RV
- ◆ Medical equipments.

ISO 9001	ISO 14001	OHSAS 18001	TLC
CE	RoHS	UL	PV POLYMER

### Specification

Nominal Voltage	2V	
Nominal Capacity(10HR)	400.0AH @10hr-rate to 1.80V per cell @25°C	
Dimension	Length	210±2mm (8.27 inches)
	Width	150±2mm (6.89 inches)
	Container Height	330±2mm (12.99 inches)
	Total Height (with Terminal)	350±2mm (13.78 inches)
Approx Weight	Approx 22.4 Kg (49.38 lbs)	
Terminal	T11	
Container Material	ABS	
Max. Discharge Current	2000A (5s)	
Internal Resistance	Approx 0.70mΩ	
Operating Temp.Range	Discharge	-20~60°C (-4~140°F)
	Charge	0~50°C (32~122°F)
	Storage	-20~60°C (-4~140°F)
Nominal Operating Temp. Range	25±5°C (77±41°F)	
Float charging Voltage	2.27 to 2.3 VDC/unit Average at 25°C	
Recommended Maximum Charging Current Limit	80 A	
Equalization and Cycle Service	2.43 to 2.47 VDC/unit Average at 25°C	
Capacity affected by Temperature	40°C (104°F)	103%
	25°C (77°F)	100%
	0°C (32°F)	86%
Self Discharge	JYC GD series battery may be stored for up to 6 months at 25°C(77°F) and then a freshening charge is required. For higher temperatures the time interval will be shorter.	

### Constant Current Discharge Characteristics: A (25°C)

F.V/Time	15MIN	30MIN	1HR	2HR	3HR	4HR	5HR	6HR	8HR	10HR
1.60V	543.1	400.5	249.8	153.2	114.1	81.87	71.66	64.34	51.94	41.66
1.65V	516.4	384.6	246.6	147.6	109.3	79.00	70.94	62.79	49.61	41.27
1.70V	481.5	362.5	241.8	145.2	106.9	78.28	69.93	61.24	48.84	40.87
1.75V	427.5	326.2	222.6	137.3	101.3	73.97	69.03	58.14	47.29	40.43
1.80V	368.0	297.2	209.9	130.9	97.36	73.26	67.83	57.36	46.51	40.06
1.85V	311.2	267.5	193.9	123.7	92.57	67.51	63.84	54.26	44.19	37.61

### Constant Power Discharge Characteristics: W(25°C)

F.V/Time	15MIN	30MIN	1HR	2HR	3HR	4HR	5HR	6HR	8HR	10HR
1.60V	950.8	729.9	464.8	286.7	212.7	153.9	142.5	124.1	98.84	83.01
1.65V	925.9	726.0	462.3	282.5	208.5	151.6	141.1	122.6	98.00	82.22
1.70V	874.6	687.1	457.7	278.4	205.3	151.0	139.5	119.7	96.49	81.73
1.75V	779.1	619.2	429.3	263.5	197.9	143.4	137.5	113.8	93.45	80.90
1.80V	674.3	564.9	408.3	251.7	189.8	142.7	135.1	112.5	91.94	80.24
1.85V	575.0	509.4	378.7	238.3	180.8	132.2	127.5	106.5	87.37	75.60

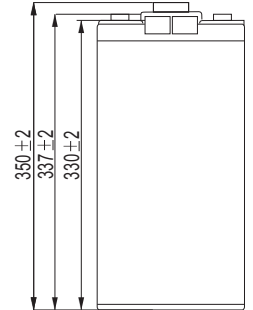
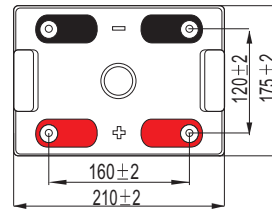
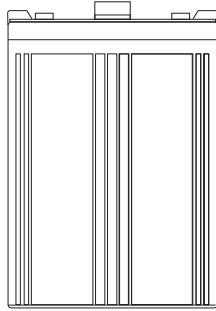
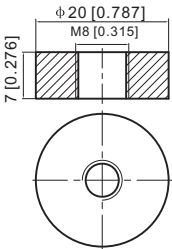
Note The above data are average values, and can be obtained with 3 charge/discharge cycles. These are not minimum values.



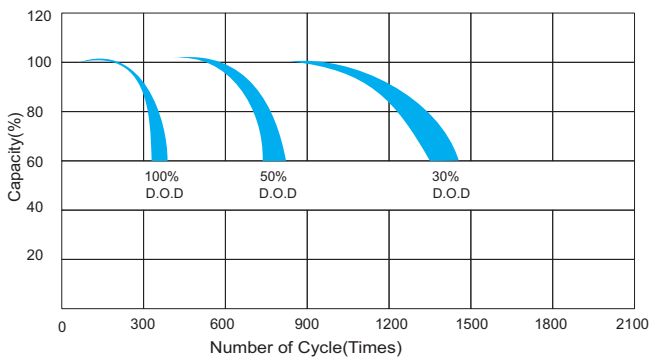
## GD400-2 2V400AH GD SERIES-Deep Cycle Battery

### Dimensions

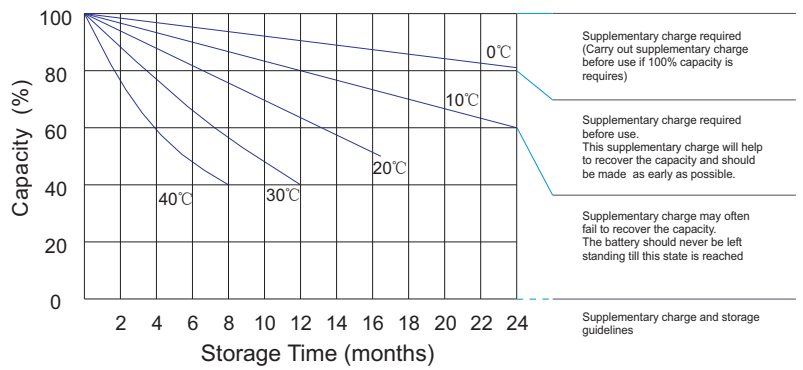
#### T11 Terminal Unit: mm [inches]



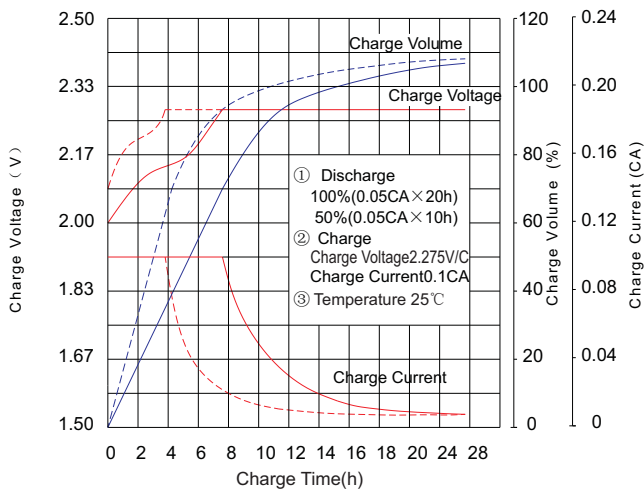
### Life characteristics of cyclic use



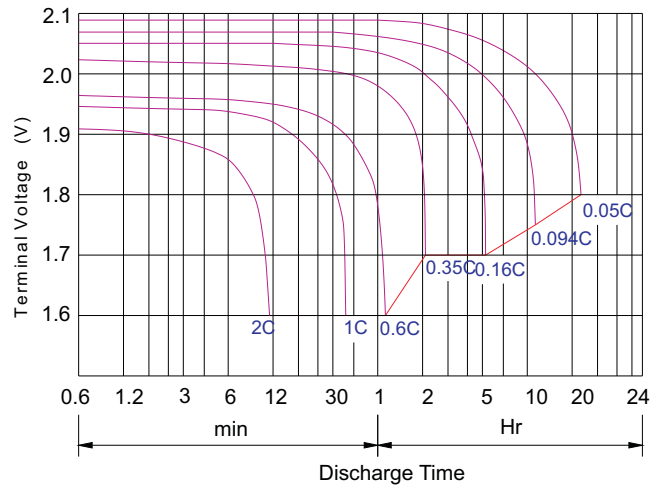
### Storage characteristic



### Charge characteristic Curve for standby use



### Discharge characteristic Curve



### JYC GD BATTERIES

This information is generally descriptive only and is not intended to make or imply any representation, guarantee or warranty with respect to any cells and batteries. Cell and battery designs/specification are subject to modification without notice. Contact JYC for the latest information.